

LEONIDS  
LINAUTS

# LEONIDS LINAUTS

ECCLESIASTICAL AND FINE ARTIST

SHORT REVIEW OF ARTIST'S WORK  
IN ECCLESIASTICAL ART FIELD,  
SECULAR SUBJECTS  
IN  
VARIOUS MEDIUMS

THIS BOOKLET IS COMPOSED TO INTRODUCE  
THE GENERAL PUBLIC TO SOME ASPECTS  
OF THE ARTISTS WORK, HIS PRINCIPLES AND  
METHODS, BUSY MIND, FAITH AND DESTINATIONS

UNFORTUNATELY, MANY INFLUENCES IN OUR  
DAILY LIFE EFFECT OUR RELATIONSHIPS—

WE ARE BROUGHT TOGETHER OR WE DEPART

IN ONE WE AGREE IN ONE WE BELIEVE

HE WHO GAVE US THE GIFT OF UNDERSTANDING,  
MAKES US FREE IN OUR WAYS

OF LIVING, WAYS OF THINKING, WAYS OF  
CREATING, WAYS OF EXPRESSING, BUT—

HE DELIVERED FOR US THE LAW OF

TEN COMMANDMENTS AND  
OBLIGATED US TO INCORPORATE THE ESSENCE

OF THESE IN EVERY OTHER LAW UNDER  
THIS SUN, TO RESPECT THEM, TO EXERCISE

THEM AND TO CONTINUE TO INTRODUCE  
THEM TO NEXT GENERATIONS, IN THIS

WAY WE CONTINUE TO LIVE AS HUMANS

## Quotations

"My thesis is neither new, nor mine; it is that true poet does not make, but rather An Other writes through him.

Without the work of this informing spirit the would-be maker produces versification; he 'expresses himself'. But the poet emptied of self, to receive from the Other that which is separate, outside and transcendent. This the poet transcribes into a work of art.

So on the one hand, we have the pretty glass of many churches, made by boors for the indifferent stare of boors. On the other hand, the windows of the Redeemer of Reading, are the work of one who, seized by the Other, was told to set forth The Holy One and His redemptive act - in this case glass, a medium as fragmented, crazy and brittle as man himself. These windows are not decoration; they form part of the fabric of the introit, the going in to the Altar of GOD."

Quotation from "Muhlenberg Weekly"  
on the subject  
"The Maker and Mania", by  
Dr. William Kinter,  
Professor of English Literature

"Waves of air, created by a touch to the string or a breeze through the pipe, enter our ears and create sounds, harmonies, and melodies in our minds. In this way we receive a form of art ... called music.

The wave of light, faster than the wave of sound, in being treated by colored glass transforms ordinary waves into multicolored impressions in our eyes, hits the screens of our minds, and becomes a different experience.

Art in stained glass is the most permanent form of art ... its changing appearance depending on the circumstances of the source of light. Strength of light, subtlety, or other high fidelity values, crescendos and decrescendos, piano and fortissimo-- vary. An artist choosing this form - 'frozen music' - creates symphonies, menuets, gavottes, or very simple 'eveningsongs'."

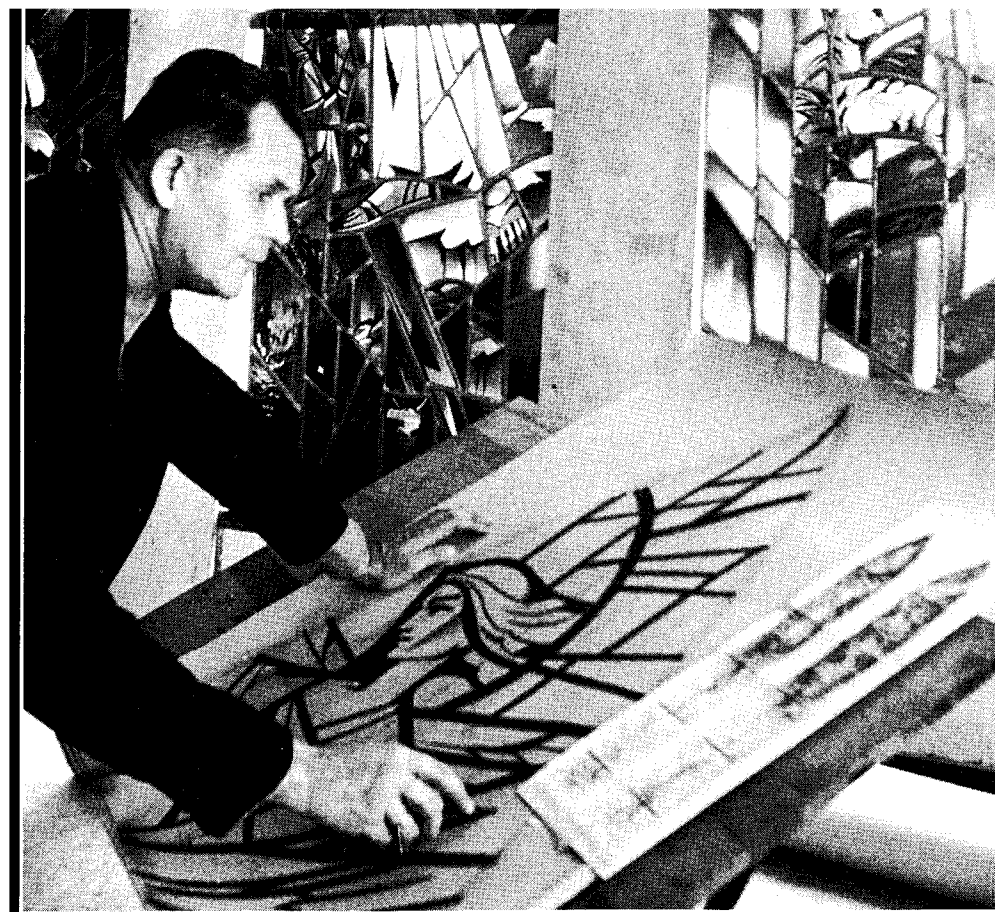
L. Linauts - from a lecture delivered to the  
Association of Organists, July 23, 1962.

Creations in glass - today called stained glass windows - actually are not merely utilitarian installations, decorative and colorful elements in the building; they are a translucent form of art being set in the openings in the walls, or located otherwise in the path of light.

They are filters of light - Great Light - transforming ordinary light into another type of light ... a radiance from the ALMIGHTY.

The church is mediator of all elements, which melts together many values, making man an alloy-hard, flexible, and resistant to corrosion.

L. Linauts - from lecture delivered to  
Association of University Women group  
in Harrisburg, April 14, 1957



LEONIDS

LINAUTS

Leonids Linauts, born July 8, 1914 in Latvia, came to the United States as a refugee in 1949 sponsored by a Quaker family in Jenkintown, near Philadelphia, Pennsylvania.

At the age of fourteen he started to study fine arts, graduating from Teachers Institute in Rezekne, Latvia as an art teacher after which he studied in the Academy of Fine Arts, Riga, Latvia, specializing in portrait and mural painting. In addition to the regular curriculum he turned to the liturgical art field, specializing in stained glass and adopting skills and knowledge in mosaics, sculpture, etc.

Two of his outstanding teachers in liturgical art fields were: Professor Dr. Pauls Kundzins, head of church architecture of the University of Latvia in Riga and Professor A. Antonovs, professor in church arts, history and architecture.

After completing formal art education in Latvia, he studied Medieval French, German and English Cathedrals, especially stained glass creations, of all periods.

During his first three years in the United States he served as supervisor and head of the art department of a stained glass studio in Reading, Pennsylvania.

In 1953 Linauts established studios in Mohnton near Reading and since that time has been creating stained glass windows, murals and other art objects for churches and secular buildings all over the country, portraying in his work, unique individuality.

Linauts is well known as a lecturer, author and scholar in liturgical art fields, art history, religious subjects and ethnology of cultures.

Music is his 'stream of dreams' . . .

The Linauts studios are located at 29 North Church Street, Mohnton (near Reading, Pennsylvania,) where he lives with his wife Dainuvita and their eight children.

Linauts' work is in the permanent collections in Washington County Fine Arts Museum in Hagerstown, Maryland, In William Penn Pennsylvania State Museum in Harrisburg, Pennsylvania, Lockhaven State College art collection, Kutztown State College and in many private art collections.

# Inspirations

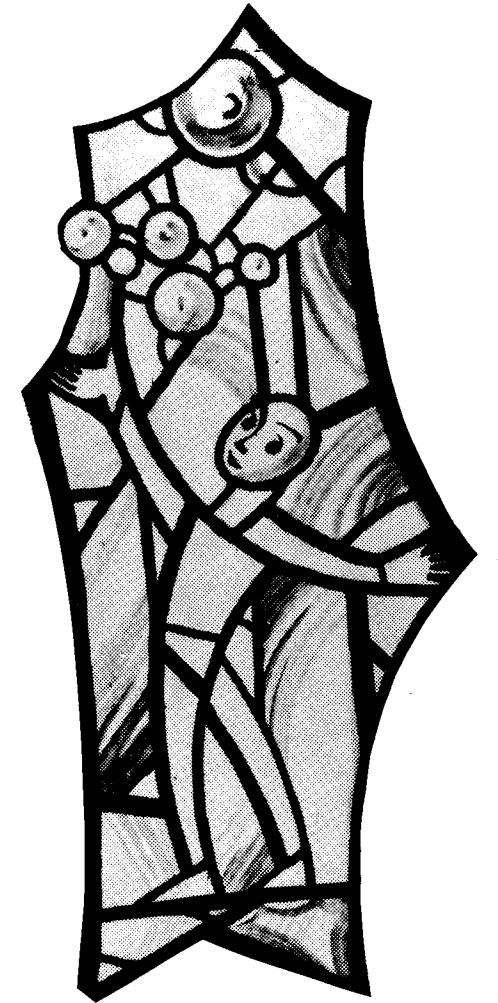
*As A Part Of Artists Life And Observations*

## BOY WITH SOAP BUBBLES

. . . Memories of childhood reflected in the kaleidoscopic colors of free floating soap bubbles

Therein a child observes the amusing distortions of mirrored images . . .

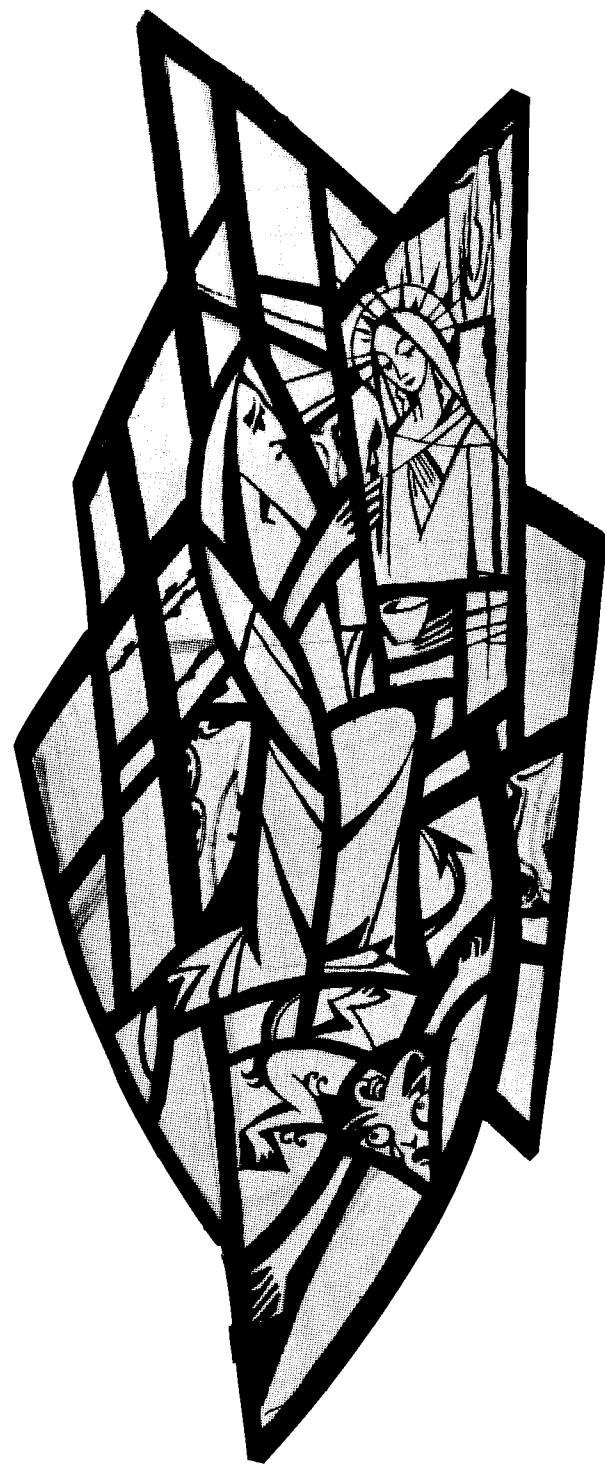
sometimes ridiculous . . .  
bursting - avolving again  
in different forms  
A lifetime treasured  
for  
a lifetime.



## CAT IN THE CORN FIELD

Cat - friendly  
Cat - angry  
Cat - pensive  
          offensive  
          defensive

. . . Sneaky or direct - its paws  
deliberately placed.  
Many souls.  
Most undefined.



## ST. LUKE AND LUCIFER

LUCIFER spotted St. Luke in the distance, quite involved in painting the image of Mary, Mother of Christ.

The beauty and radiance captured on the painting enraged the devil, and his mind began churning in search of ideas on how to spoil the image. He concluded that disturbing the painter or distracting him in some manner would take care of the situation.

Transforming himself into a nicely dressed gentleman, Lucifer approached St. Luke and attracted his attention with his eloquent attempts at starting a refined and intriguing conversation.

But St. Luke was not at all impressed by the appearance and compliments of this man, and thus quietly asked him to leave him in peace.

Retreating in silent but furious anger, the devil happened to hear St. Luke whistling a happy tune while enjoying his work.

That's it! The song of a bird will distract him! thought Lucifer. And so he made himself into the image of a beautifully singing bird and gracefully circled the area.

But St. Luke's attention was directed only towards the painting, and thus the devil failed again.

In the next attempt Lucifer transformed himself into a lovely, tempting, woman, but again - to no avail.

Obviously being unable to distract St. Luke's mind, Lucifer mulled over the possibility of effectiveness of a physical disturbance. Perhaps if he turned himself into a cold, wet frog and jumped on St. Luke's bare foot, the painter would inadvertently make an improper stroke. And so he tried.

And so again it didn't work! Hell! screamed Lucifer, and slowly began taking his own shape; his horns slowly appeared and his tail started growing . . . and St. Luke quietly stepped on the devil's tail - pinning him to the ground - and finished the painting of Mary, Mother of Christ.

## MUSICIAN ANGEL

Voice of a bell . . .

a copper tongue

Rings from the steeple  
of church.

Maybe . . .

This is an angels voice

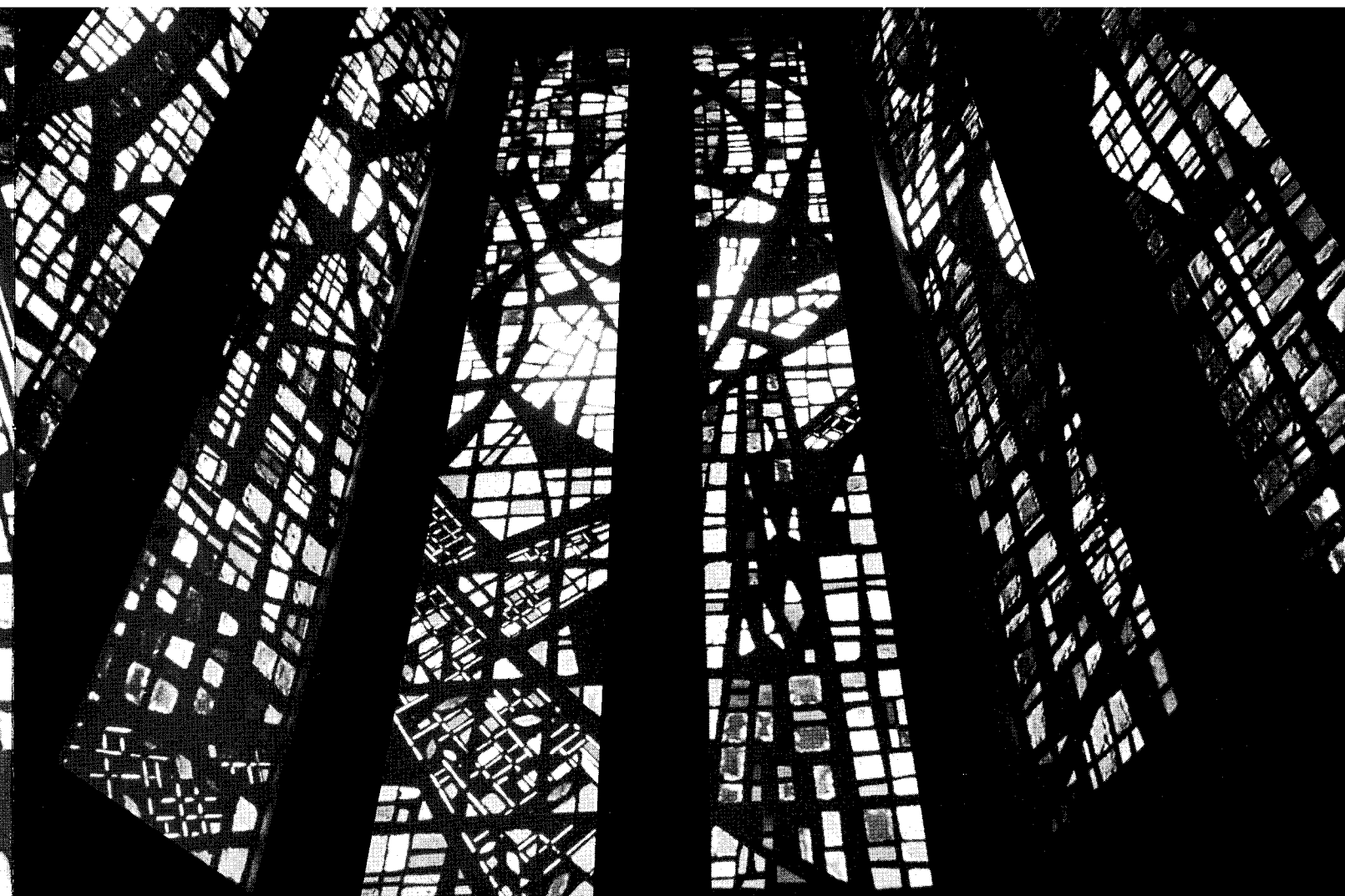
. . . as he touches the strings  
of his harp.



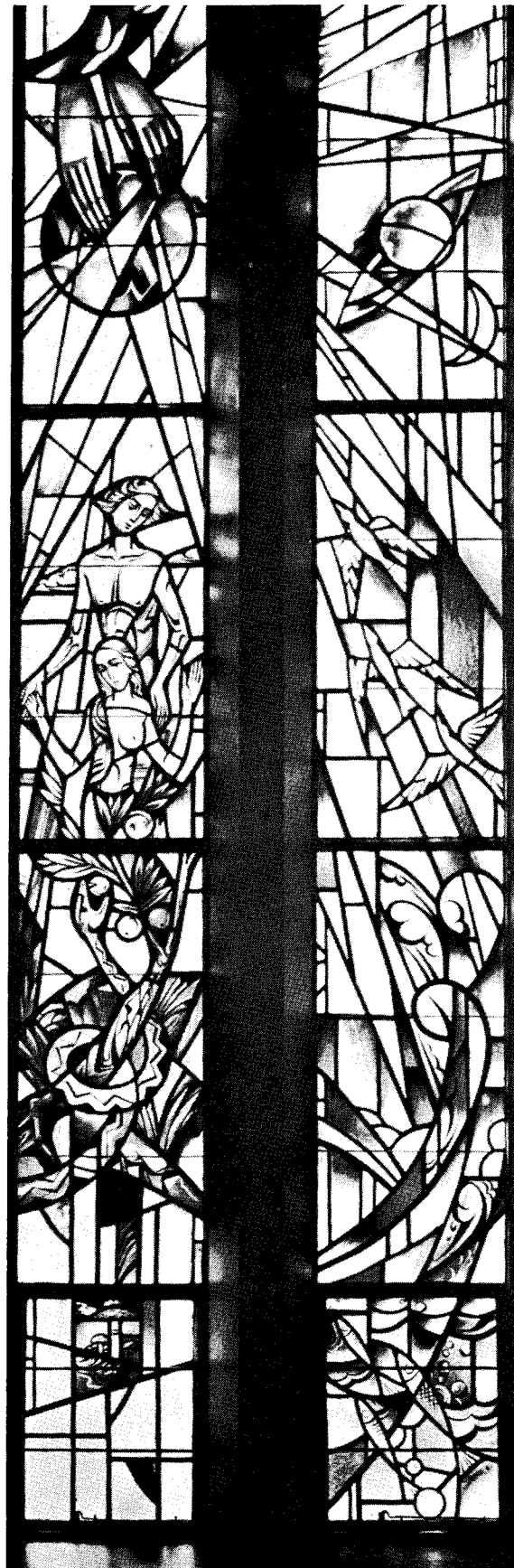


ST. THOMAS CONFRONTING JESUS CHRIST

Faceted stained glass wall in St. Thomas Episcopal Church  
St. Thomas Road, Lancaster, Pennsylvania



CHRIST EPISCOPAL CHURCH, WARREN, OHIO  
BAPTISTRY - FACETED GLASS



ST. JOHN'S LUTHERAN CHURCH

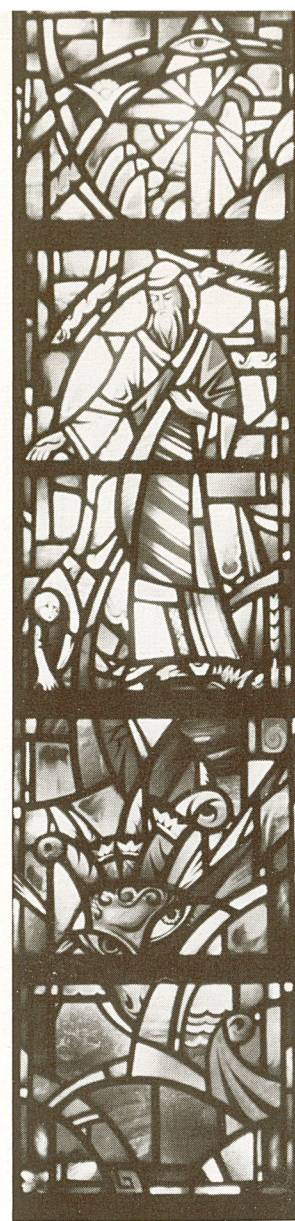
... God created man in his own image ... (Genesis 1:1, 27, 31)



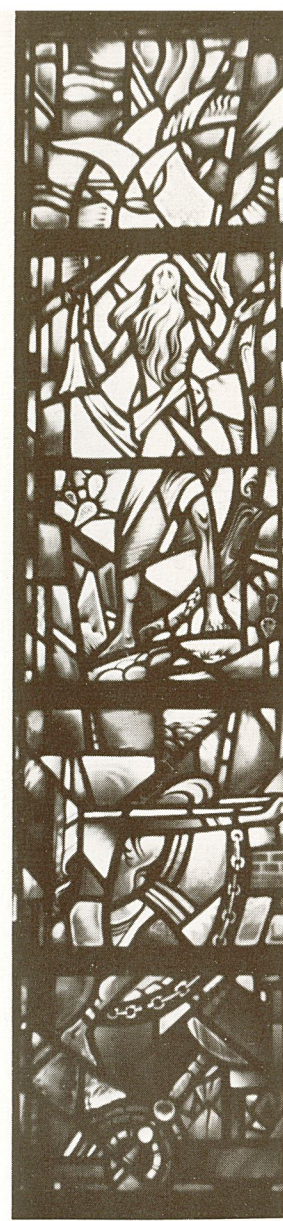
KUTZTOWN, PENNSYLVANIA

"He taught them many things in parables." (Mark 4:2)





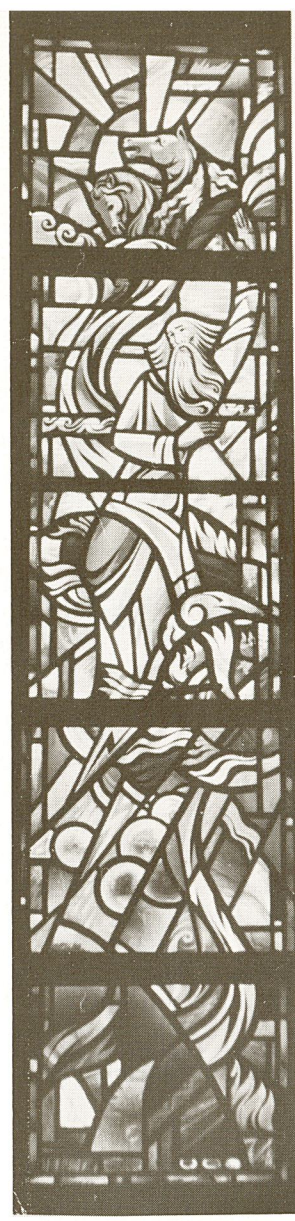
PROPHET DANIEL



PROPHET JEREMIAH



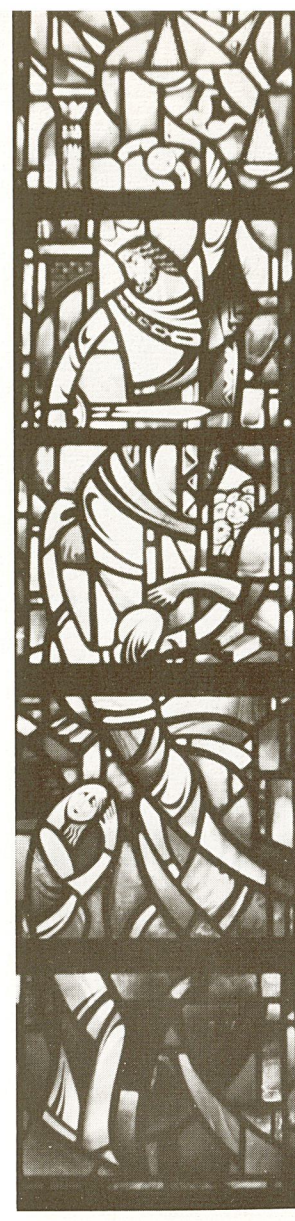
PROPHET EZEKIEL



PROPHET ELIJAH



DAVID AND GOLIATH



KING SOLOMON

HOLY REDEEMER

READING

LUTHERAN CHURCH

PENNSYLVANIA



STAINED GLASS BY LEONIDS LINAUTS IN FINE ARTS EXHIBITION BY LATVIAN ARTISTS 1962  
IN READING PUBLIC MUSEUM AND ART GALLERY

## EXHIBITIONS

1946 - STUTTGART, - GERMANY; 1946 - MUNICH- GERMANY  
 1947 - BAD OINHAUSEN, - GERMANY ; 1947 - AUGSBURG - GERMANY;  
 1948 - ESSLINGEN - GERMANY ; 1950, 1951, 1953, 1957, 1959,  
 1960 - PHILADELPHIA, 1966 - CLEVELAND.  
 1961, 1966 - READING PA. U.S.A. , 1956 - NEW YORK, - 1960 - NEW YORK,  
 1961 - HAGERSTOWN



STAINED GLASS DESIGNS, CARTOONES AND CREATIONS IN FINE ARTS  
EXHIBITION IN READING PUBLIC MUSEUM AND ART GALLERY 1965

## ONE MAN SHOWS

1949- JENKINTOWN PA.- QUAKER MEETING HOUSE- EASEL PAINTINGS  
 1954 - KUTZTOWN PA.- STATE COLLEGE ART DEPT.  
 1961- HAGERSTOWN- WASHINGTON COUNTY ART MUSEUM- STAINED GLASS  
 1968- HARRISBURG PA. - WILLIAM PENN MEMORIAL MUSEUM-STAINED GLASS

## SETUP OF STUDIOS

The studios offer most types of Ecclesiastical art creations, such as stained glass, mosaics, tapestry, and decorations in metal and other materials.

Before actual work is begun, careful analysis are carried out to study the styles of architecture, aspects of spiritual values, etc.

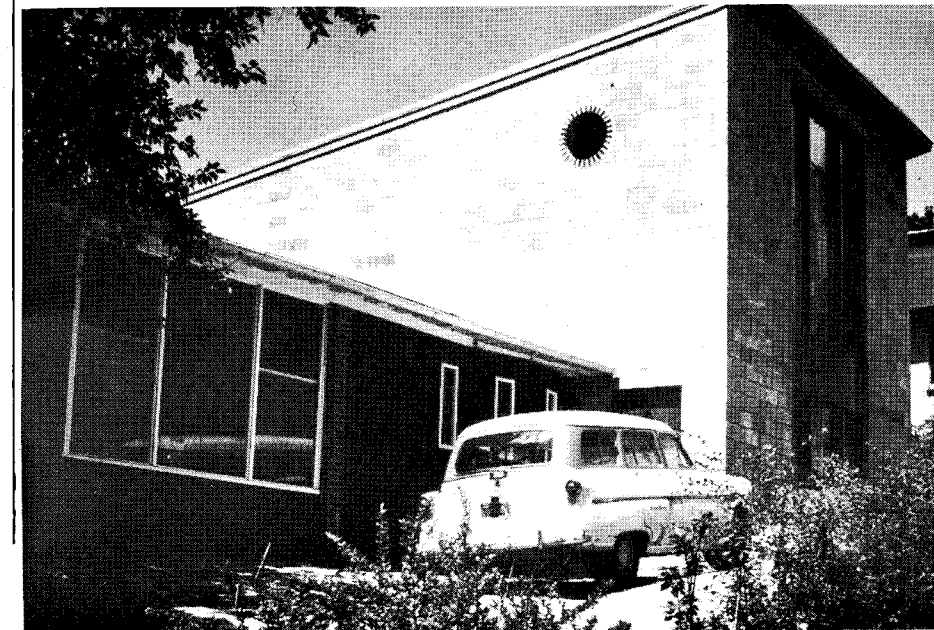
Very often, Leonids Linauts is called for consultation by architects, clergymen, and laymen to solve or discuss problems in order to achieve proper and distinguished end results, and to create harmony of totality.

The studios are setup for the functions of artistic designing and executing, with departments of glass cutting, assembling, casting, and restoring.

All of the art work is done by Leonids Linauts personally. Glass selection is under his personal supervision, performing refinements of exquisite glass, especially in the final stages of execution. Well trained studio craftsmen perform glazing, casting of faceted glass, and installing of finished work in particular locations.

For visitors and lecture purposes, a large gallery displaying various Ecclesiastical art objects serves the interested guests. Student groups and other organizations are most welcome as visitors.

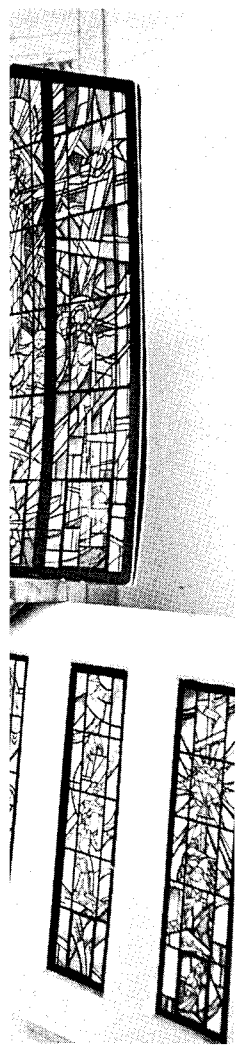
OFFICE



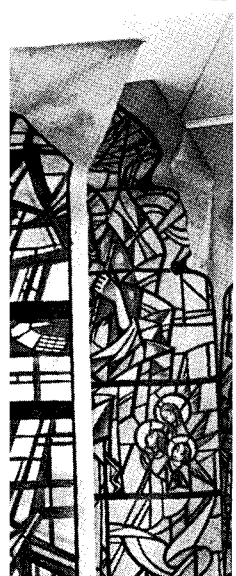
ART DEPARTMENT



GLASS CUTTING DEPARTMENT



LEONIDS LINAUTS  
DESIGNING SKETCHES



DESIGNING THE CARTOONE

SELECTING THE GLASS



AT THE EASEL



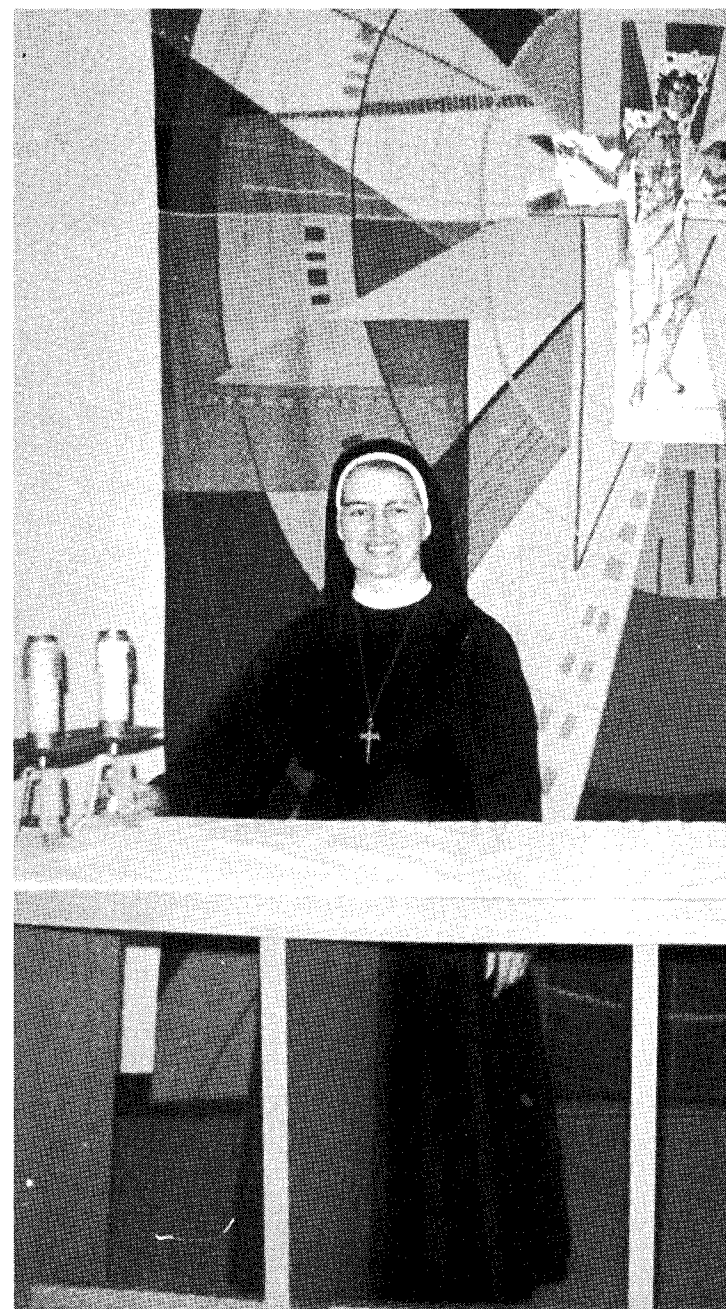
# ASSISTANCE

Sister M. Hadwig, C.P.S., is a graduate of the Koelner Werkeschulen, Cologne, Germany. She holds a degree in monumental art. A native of Germany, Sister Hadwig lived for eighteen years in Holland, before coming to the United States in February of 1966. She lives currently in Shillington, Pennsylvania, at the American Provincialate of her congregation, the Missionary Sisters of the Precious Blood.

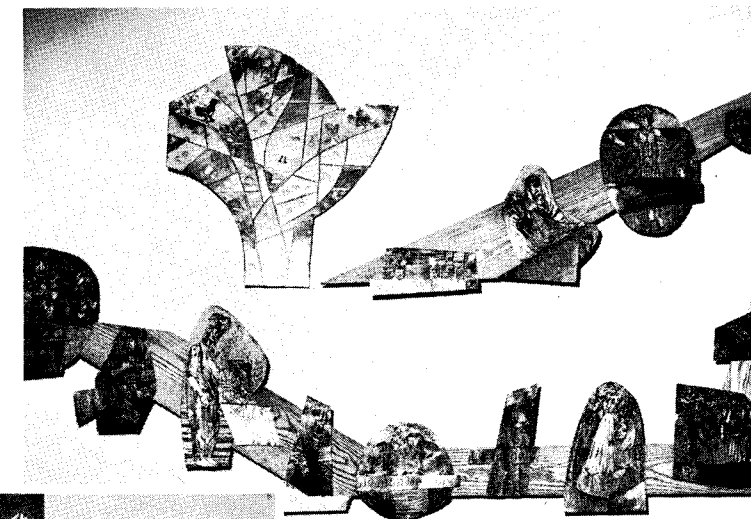
Sister Hadwig has designed Church interiors and appurtenances in Holland, Germany, Denmark. Her work, though modern, has been acclaimed by artists and liturgists because it is easily understood by the general public. Sister Hadwig also studied at Maria Laach, and met there with artists, architects, liturgists and musicians planning liturgical renewal in the spirit of Vatican Council II.

Closely located to the Leonids Linauts Studios in Mohnton, Sister M. Hadwig is associated in active work here. Depending on the nature of creations, she is designing as well as executing specific commissions.

Exhibits of Sister Hadwig's work have been at the Southeastern New Jersey Liturgical Conference, Pennsauken, N.J.; Wesleyan University; The Contemporary Christian Art Shop, New York City; Holy Trinity Evangelical Lutheran Church, Lancaster, Pa.; St. Hubert's High School, Philadelphia.



STATIONS OF CROSS  
COPPER ON WOOD



HISTORICAL LIFE OF  
JESUS CHRIST  
CARTOONE FOR CERAMIC  
PANELS ON WOOD BASE



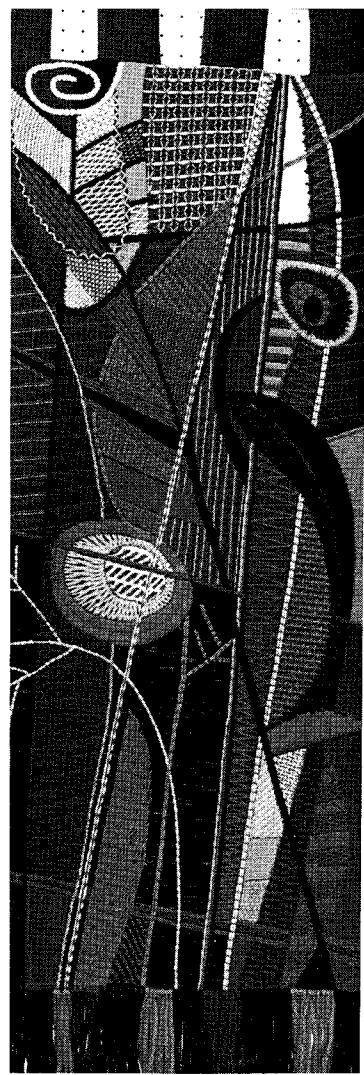
TABERNACLE  
BRONZE AGAINST  
MOSAIC BACKGROUND



GOOD SHEPPARD  
TAPESTRY-APPLIQUE



1



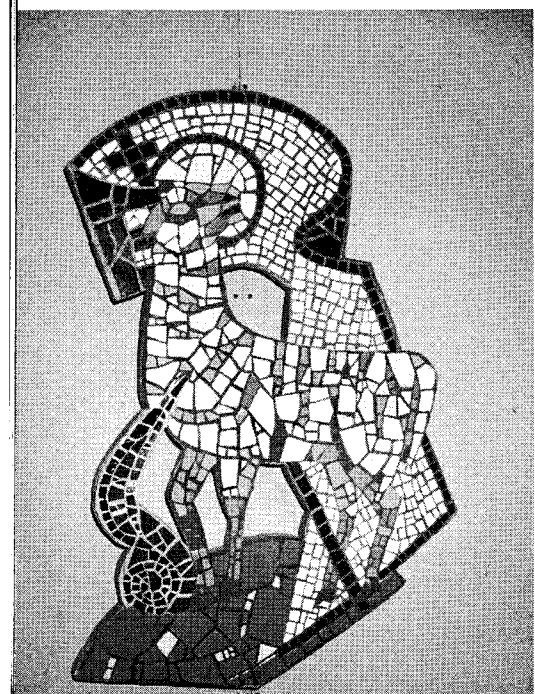
4



5



2



3

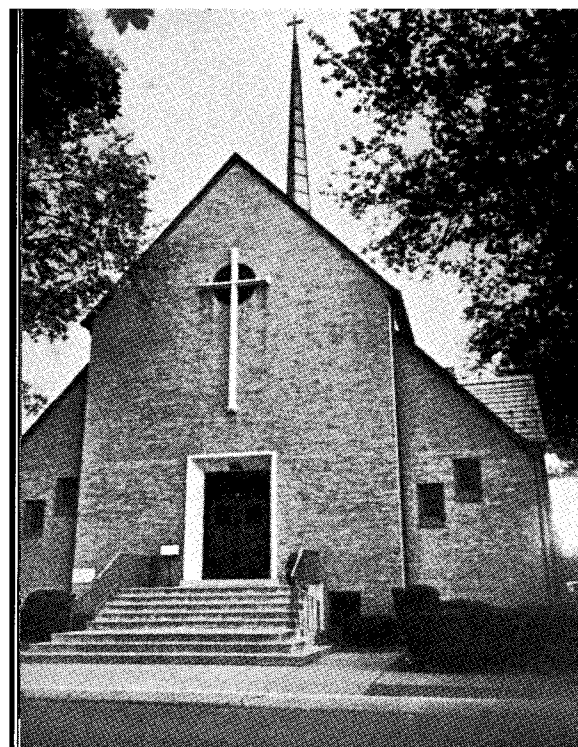
## VARIOUS CREATIONS IN VARIOUS MEDIUMS

BY SISTER M. HADWIG

1. 6' x 8' wall panel - copper on the wood base
2. Stations of the Cross - copper, wood, bronze wire
3. Free standing mosaic
4. Tapestry - yarns in various stitches
5. Tapestry - applique



"ONE MAN SHOW" OF SISTER M. HADWIG IN LANCASTER, PA.



FIRST PRESBYTERIAN CHURCH,  
ALLENTOWN, PA.

EVERETT ASSOC. ARCHITECTS

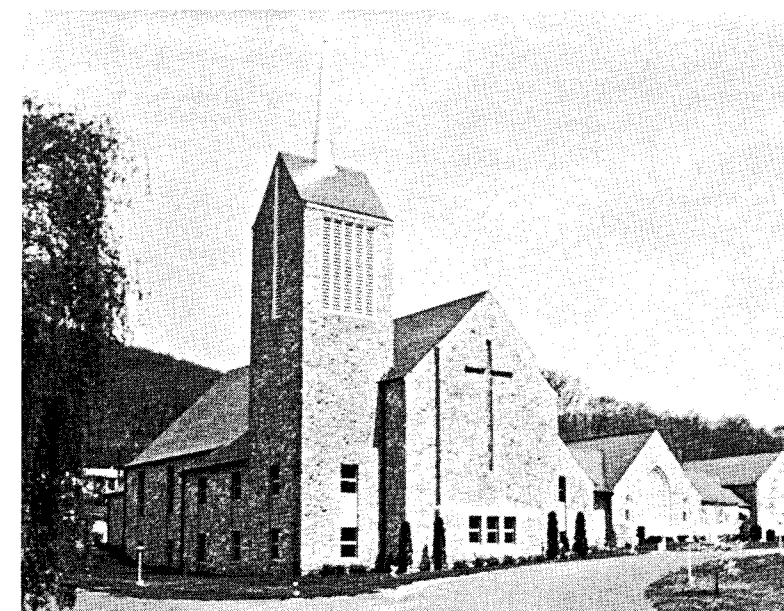


PALM LUTH. CHURCH - Palmyra, Pa., Dana W. Gangevere, Architect

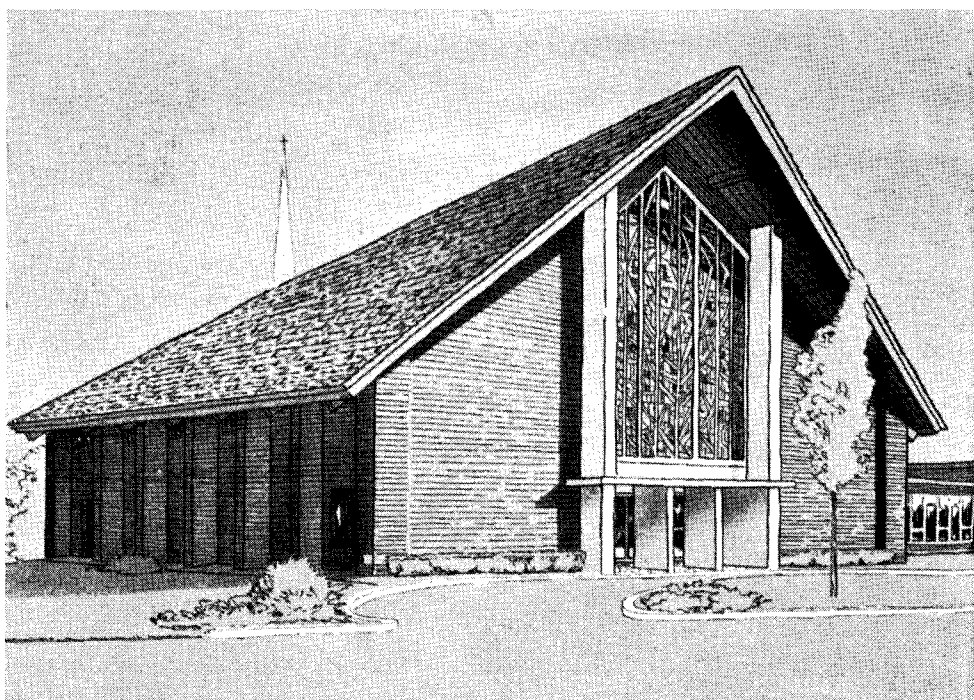


SCHWARZWALD LUTHERAN CHURCH,  
JACKSONWALD, PA.

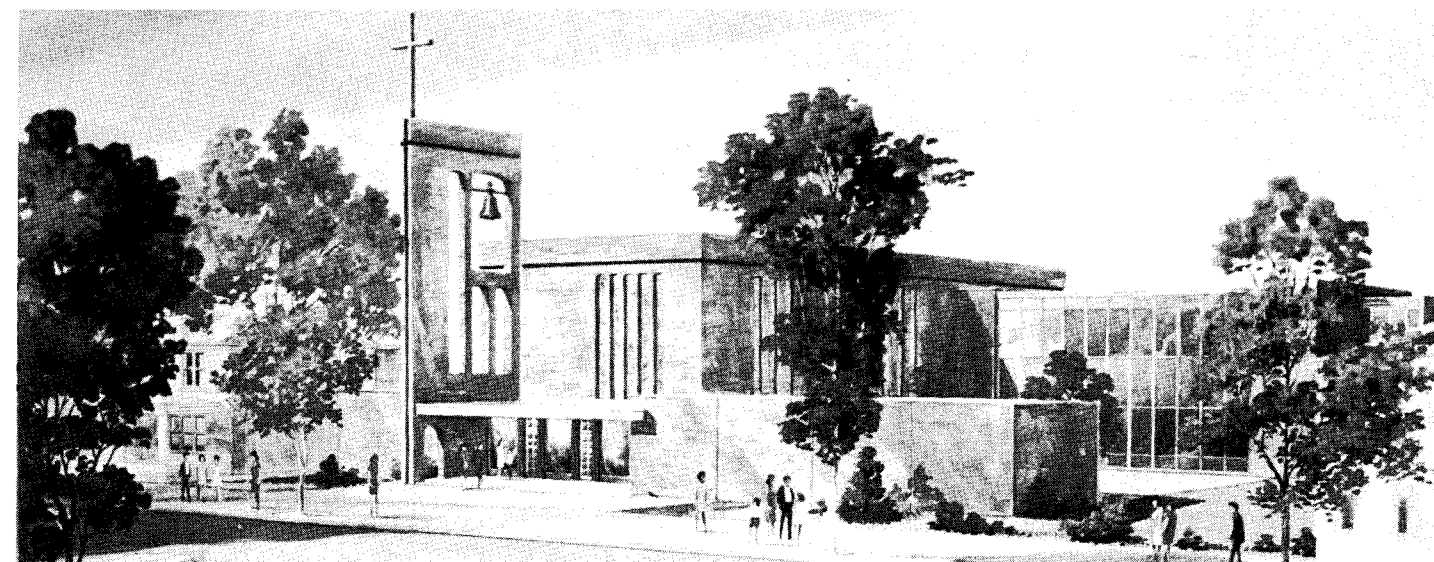
ELMER ADAMS ASSOC. ARCHITECTS



CHRIST EPISCOPAL CHURCH, Warren, Ohio, Harold Wagoner, Architect



ST. THOMAS EPISCOPAL CHURCH  
COLEMAN-COLEMAN ARCHITECTS



ZION UNITED METHODIST CHURCH, MYERSTOWN, PA.  
HAAK - KAUFMAN - ARCHITECTS

## LIST OF LOCATIONS OF INTEREST OF PERFORMED WORK

Holy Redeemer Lutheran Church Reading, Pa. 26 windows John Heyl Architect, Allentown, Pa.	Christ Lutheran Church Norwich, N.Y. two gables - leaded glass Quinlian, Pierick, Krause Architects
Christ Lutheran Church Reading, Pa. Chancel wall - faceted glass Dana W. Gangevere - Architect - Reading, Pa.	St. Josephs R.C. Church Reading, Pa. 2 rose windows, 4 chancel windows-leaded Freeman G.C. Architects, Pennside, Pa.
Schwarzwald Lutheran Church Jacksonwald, Pa. 8 windows-faceted and leaded Elmer Adams-Assoc. Architects-Reading, Pa.	St. Thomas Episcopal Church Lancaster, Pa. Balcony wall-Faceted glass Coleman and Coleman, Architects, Hershey, Pa.
Community United Church of Christ St. Lawrence, Pa. 10 windows-leaded.	St. Mark's Lutheran Church Williamsport, Pa. Colonial Windows Heyl, Treby Assoc. Architects, Allentown, Pa.
First Presbyterian Church Reading, Pa. 20 windows-leaded Heyl, Treby Architects - Allentown, Pa.	St. Timothy's R.C. Church Philadelphia, Pa. 38 windows-leaded
First United Church of Christ Reading, Pa. 20 windows-leaded	First Reformed Church Skuylkill Haven, Pa. Chancel Window, balcony wall-faceted glass Heyl, Treby Assoc. Architects, Allentown, Pa.
Pennside Presbyterian Church Mt. Penn, Pa. Large Chancel and rear windows Heyl, Treby - Architects, Allentown, Pa.	First Reformed Church Allentown, Pa. Faceted glass wall Bond, Miller, Seibert, Architects, Allentown, Pa.
St. John's Lutheran Church Kutztown, Pa. 28 windows-leaded Norman Mansell Architects, Philadelphia, Pa.	Trinity Reformed Church Tamaqua, Pa. Gable and front wall, Chancel wall, leaded glass Muhlenberg Brothers Architects, Reading, Pa.
Holy Trinity Lutheran Church Lebanon, Pa. 62 windows-leaded Norman Mansell Architects, Philadelphia, Pa.	Christ Presbyterian Church Philipsburg, N.J. 10 colonial windows Heyl, Treby Assoc. Architects, Allentown, Pa.
Trinity Lutheran Church Yeadon at Philadelphia, Pa. 14 windows-leaded Norman Mansell Architects, Philadelphia, Pa.	Zion United Methodist Church Myerstown, Pa. 17 windows-Faceted glass Haak & Kaufman Architects, Lancaster, Pa. Moyerstown, Pa.
Grace Lutheran Church Philipsburg, N.J. 10 windows-leaded Norman Mansell Architects, Philadelphia, Pa.	Church of Bretheren Myerstown, Pa. 5 Windows-Faceted glass Haak & Kaufman Architects, Lancaster, Pa. Moyerstown, Pa.
First Presbyterian Church Allentown, Pa. 36' x 36' balcony wall-leaded glass 10 windows - leaded glass Everett Assoc. Architects, Allentown, Pa.	Trinity Lutheran Church Robesonia, Pa. Rear balcony wall, 10 side windows-leaded
Church of Mediator - Episcopal Allentown, Pa. 3 windows-faceted and leaded glass Everett Assoc. Architects, Allentown, Pa.	National Baptist Church Washington, D.C. 4 windows-leaded
St. Paul's Lutheran Church Fleetwood, Pa., 16 windows-leaded Dana W. Gangevere, Reading, Pa.	Trinity Cathedral-Episcopal Easton, Maryland One window-leaded
Palm Lutheran Church Palmyra, Pa., 16 windows-faceted and leaded glass Dana W. Gangevere Architects, Reading, Pa.	Trinity Episcopal Church Chambersburg, Pa. 17 windows-leaded
St. Paul's Reformed Church Fleetwood, Pa. Rose Window-Leaded Glass Muhlenberg Brothers Architects, Reading, Pa.	Reading Public Museum and Art Gallery Reading, Pa. 6 windows in Memorial Hall-leaded
St. John's Lutheran Church Easton, Pa., 15 windows - Colonial	Kutztown State College Fine Art Building Kutztown, Pa. Entrance Hall doorway

*ACKNOWLEDGEMENT*

*I would like to express my gratitude to all who assisted in the production of this publication, especially to the Reading Eagle Company for their kind permission to use many of the photographs. Also to all those clergymen, congregations and architects for their invaluable cooperation.*

*Leonids Linauts*

*Leonids Linauts.*

TYPESETTING - QUALITY COMPOSITION COMPANY, INC.  
BALTIMORE, MARYLAND  
ART DIRECTOR - LIENE LINAUTS  
PRINTERS - MARTIN BROTHERS COMPANY  
READING, PENNSYLVANIA